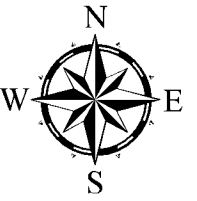




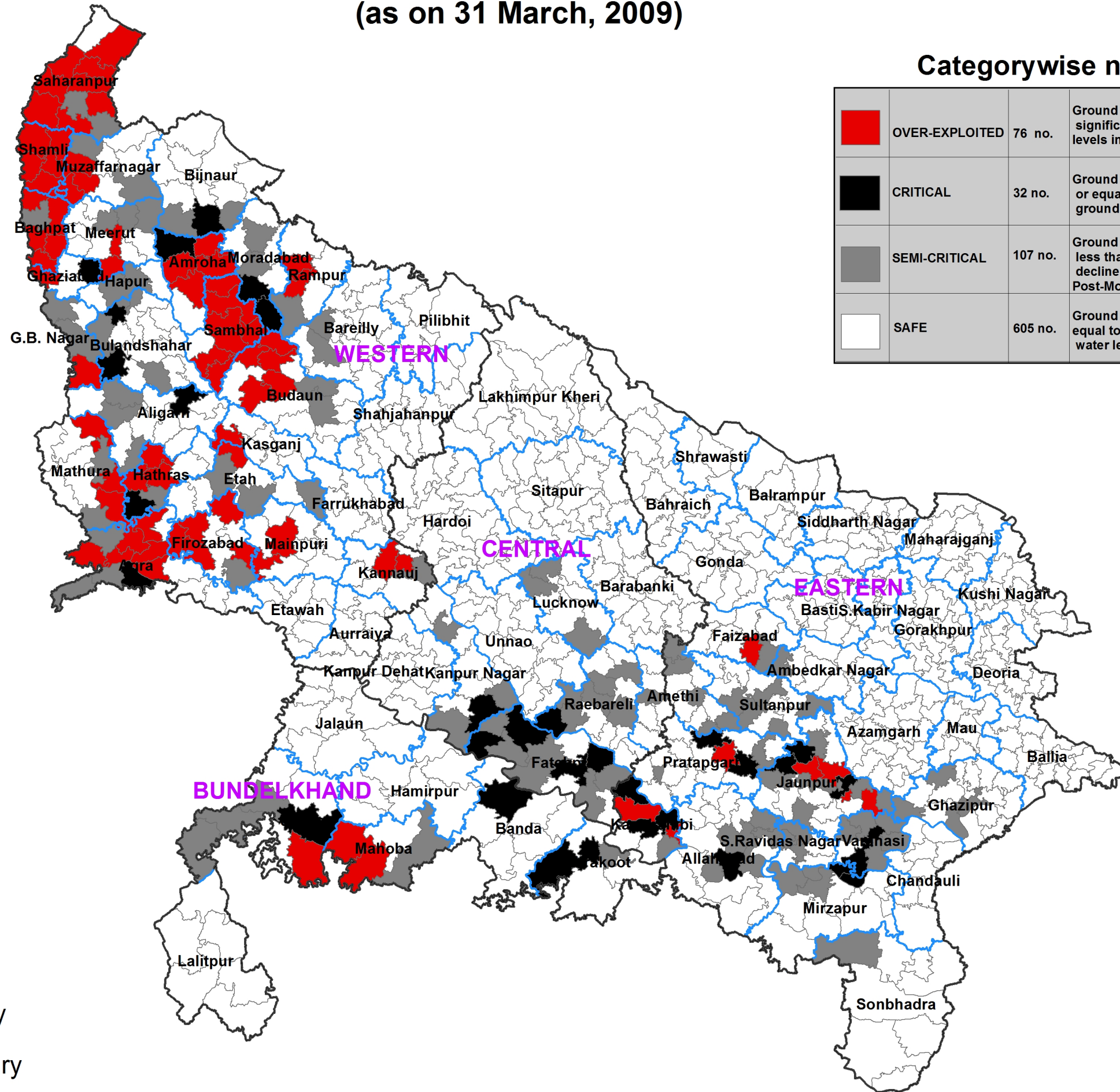


Stressed Blocks in Uttar Pradesh (as on 31 March, 2009)


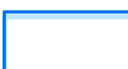



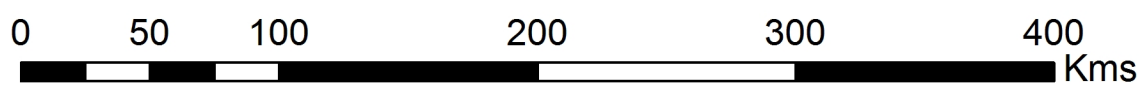
Categorywise number of Blocks

	OVER-EXPLOITED	76 no.	Ground water exploitation more than 100% with significant long term decline in ground water levels in both Pre & Post-Monsoon period.
	CRITICAL	32 no.	Ground water exploitation more than 90% but less than or equal to 100% with significant long term decline in ground water levels in both Pre & Post-Monsoon period.
	SEMI-CRITICAL	107 no.	Ground water exploitation more than 70% but less than or equal to 90% with significant long term decline in ground water levels in either Pre or Post-Monsoon period.
	SAFE	605 no.	Ground water exploitation is less than or equal to 70% with no decline in ground water levels in both Pre and Post-Monsoon period.



Legend

-  Block Boundary
-  District Boundary
-  Region Boundary



Ground Water Department,
Uttar Pradesh